

DWS

ENGRAVING EMOTIONS

PERSONALIZATION GUIDE

Baccarat



**Scan this QR code
to access an online version of the
personalization guide**

SUMMARY

Safety Rules	5
Catalog	6-8
Engraving Area	9-11
Engraving Guidelines	12-26
Positioning Requirements	27-29
Embellishment Requirements	30
Engraving Process	31-44
Embellishment Process	45-46
Assistance	47

SAFETY RULES



Caution: electrical hazard - under no circumstances should you open the engraving station. Only DWS technicians are allowed to perform maintenance and repair work.



Caution: In this section pay attention to possible dangers of the laser beam.

- Do NOT activate the laser if there is no product in the engraving station.
- Do NOT use the engraving station on flammable material. In particular, do NOT use the engraving station when liquid has leaked on the product or inside the lid.
- It is strictly forbidden to use the engraving station with any products other than those listed in the catalog below.

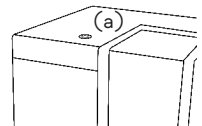
IN CASE OF ANY PROBLEM:

Two emergency buttons are available:

- At the back of the engraving station
- Directly in the app

To restart the engraving station after a manual emergency stop:

- Turn the emergency button to the left
- Press the reset button (a) to activate the laser



TO CLEAN THE ENGRAVING STATION:

Only with a soft cloth slightly humidified with water.

Do NOT use aggressive product.

Do NOT clean the lens.

CATALOG

DECORATION



**Butterfly
Blue**



**Butterfly
Turquoise**



**Butterfly
Red**



**Amor Heart
Red**



**Amor Heart
Clear**



Bud Vase



Clear Vase

CATALOG

BARWARE



**Harcourt 1841
Classic**



**Harcourt 1841
Red**



**Château Baccarat
(L)**



**Harcourt Eve
Classic**



**Harcourt Eve
Red Bouton**



Everyday



**Harmonie
N°2**



**Harmonie Whisky
Decanter Clear**



**Harmonie Whisky
Decanter Red**

CATALOG

FRAGRANCE



Baccarat Rouge
Extrait
35ml



Baccarat Rouge
Extrait
70ml



Baccarat Rouge
Extrait
200ml



Baccarat Rouge
Eau de Parfum
35ml



Baccarat Rouge
Eau de Parfum
70ml



Baccarat Rouge
Eau de Parfum
200ml

ENGRAVING AREA

DECORATION



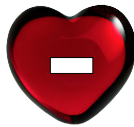
**Butterfly
Blue**



**Butterfly
Turquoise**



**Butterfly
Red**



**Amor Heart
Red**



**Amor Heart
Clear**



Bud Vase



Clear Vase

ENGRAVING AREA

BARWARE



**Harcourt 1841
Classic**



**Harcourt 1841
Red**



**Château Baccarat
(L)**



**Harcourt Eve
Classic**



**Harcourt Eve
Red Bouton**



Everyday



**Harmonie
N°2**



**Harmonie Whisky
Decanter Clear**



**Harmonie Whisky
Decanter Red**

ENGRAVING AREA

FRAGRANCE



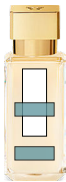
Baccarat Rouge
Extrait
35ml



Baccarat Rouge
Extrait
70ml



Baccarat Rouge
Extrait
200ml



Baccarat Rouge
Eau de Parfum
35ml



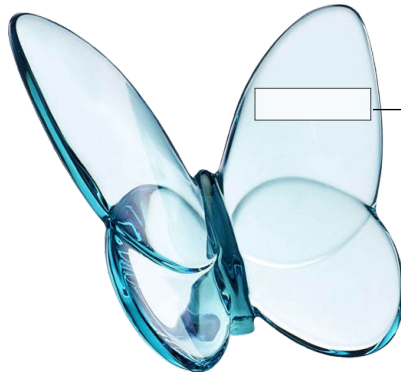
Baccarat Rouge
Eau de Parfum
70ml



Baccarat Rouge
Eau de Parfum
200ml

GUIDELINES

DECORATION



Engraving Area

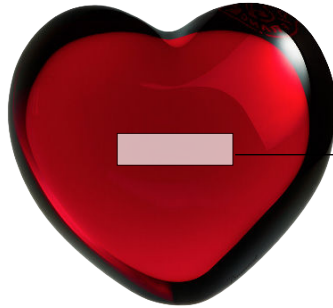
Butterfly



	Latin			Latin			Latin			Latin		
	Inter Variable			Cormorant Garamond			<i>Aston</i>			<i>Palace Script</i>		
	Engraving Type	Text, Initials, Dates		Text, Initials, Dates			Text, Initials			Initials, Dates		
	Number of lines	1		1			1			1		
	Font size (mm)	Height bottom of the text (mm)	Number MAX of Characters	Font size (mm)	Height bottom of the text (mm)	Number MAX of Characters	Font size (mm)	Height bottom of the text (mm)	Number MAX of Characters	Font size (mm)	Height bottom of the text (mm)	Number MAX of Characters
Butterfly	3.5	47	6	5.5	47	4	6	47	6	5.5	47	4

GUIDELINES

DECORATION



Engraving Area

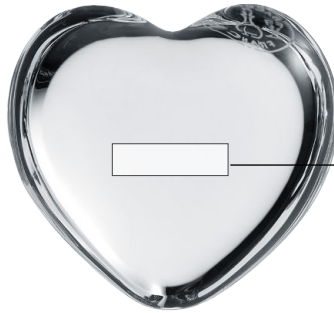
**Amor Heart Clear & Red
Front side**



	Latin			Latin			Latin			Latin		
	Inter Variable			Cormorant Garamond			<i>Aston</i>			<i>Palace Script</i>		
	Engraving Type	Text, Initials, Dates		Text, Initials, Dates			Text, Initials			Initials, Dates		
	Number of lines	1		1			1			1		
	Font size (mm)	Height bottom of the text (mm)	Number MAX of Characters	Font size (mm)	Height bottom of the text (mm)	Number MAX of Characters	Font size (mm)	Height bottom of the text (mm)	Number MAX of Characters	Font size (mm)	Height bottom of the text (mm)	Number MAX of Characters
Amor Heart	3.5	38	13	5.5	38	9	6	38	16	5.5	38	11

GUIDELINES

DECORATION



Engraving Area

**Amor Heart Clear
Rear side -Mirror**



	Latin			Latin			Latin			Latin		
	Inter Variable			Cormorant Garamond			<i>Aston</i>			<i>Palace Script</i>		
	Engraving Type	Text, Initials, Dates		Text, Initials, Dates			Text, Initials			Initials, Dates		
	Number of lines	1		1			1			1		
	Font size (mm)	Height bottom of the text (mm)	Number MAX of Characters	Font size (mm)	Height bottom of the text (mm)	Number MAX of Characters	Font size (mm)	Height bottom of the text (mm)	Number MAX of Characters	Font size (mm)	Height bottom of the text (mm)	Number MAX of Characters
Amor Heart	3.5	42	13	5.5	42	9	6	42	16	5.5	42	11

GUIDELINES

DECORATION



Engraving Area

Vase Clear



	Latin			Latin			Latin			Latin		
	Inter Variable			Cormorant Garamond			<i>Aston</i>			<i>Palace Script</i>		
	Engraving Type	Text, Initials, Dates		Text, Initials, Dates			Text, Initials			Initials, Dates		
	Number of lines	1		1			1			1		
	Font size (mm)	Height bottom of the text (mm)	Number MAX of Characters	Font size (mm)	Height bottom of the text (mm)	Number MAX of Characters	Font size (mm)	Height bottom of the text (mm)	Number MAX of Characters	Font size (mm)	Height bottom of the text (mm)	Number MAX of Characters
Vase	8-10	64	6	8-10	64	6	8-10.5	64	11	8-10	64	7

GUIDELINES

DECORATION



Engraving Area

Bud Vase



	Latin			Latin			Latin			Latin		
	Inter Variable			Cormorant Garamond			<i>Aston</i>			<i>Palace Script</i>		
Engraving Type	Text, Initials, Dates			Text, Initials, Dates			Text, Initials			Initials, Dates		
Number of lines	1			1			1			1		
Font size (mm)	Height bottom of the text (mm)	Number MAX of Characters	Font size (mm)	Height bottom of the text (mm)	Number MAX of Characters	Font size (mm)	Height bottom of the text (mm)	Number MAX of Characters	Font size (mm)	Height bottom of the text (mm)	Number MAX of Characters	
Vase	7-9	44	6	7-9	44	7	7-9	44	12	7-9	44	9

GUIDELINES

BARWARE

Engraving Area



Engraving Area



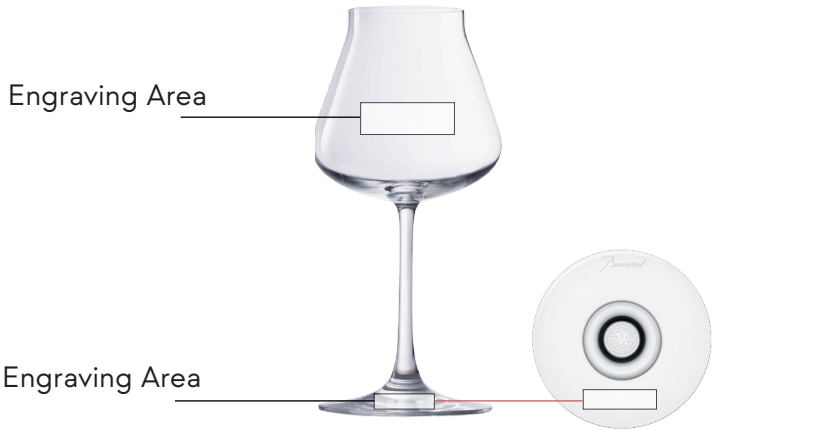
Harcourt 1841



	Latin			Latin			Latin			Latin		
	Inter Variable			Cormorant Garamond			<i>Aston</i>			<i>Palace Script</i>		
	Engraving Type	Text, Initials, Dates		Text, Initials, Dates			Text, Initials		Initials, Dates			
	Number of lines	1		1			1		1			
	Font size (mm)	Height bottom of the text (mm)	Number MAX of Characters	Font size (mm)	Height bottom of the text (mm)	Number MAX of Characters	Font size (mm)	Height bottom of the text (mm)	Number MAX of Characters	Font size (mm)	Height bottom of the text (mm)	Number MAX of Characters
Glass Stem	3-5	9	11	4-6	9	8	5-6	9	12	4-6	9	10
Glass Rim	3-5	123	10	4-6	123	8	6-8	123	8	6-8	123	5

GUIDELINES

BARWARE



Château Baccarat (L)



	Latin			Latin			Latin			Latin		
	Inter Variable			Cormorant Garamond			<i>Astori</i>			<i>Palace Script</i>		
	Engraving Type	Text, Initials, Dates		Text, Initials, Dates		Text, Initials		Text, Initials		Initials, Dates		
	Number of lines	1		1		1		1		1		
Font size (mm)	Height bottom of the text (mm)	Number MAX of Characters	Font size (mm)	Height bottom of the text (mm)	Number MAX of Characters	Font size (mm)	Height bottom of the text (mm)	Number MAX of Characters	Font size (mm)	Height bottom of the text (mm)	Number MAX of Characters	
Glass Stem	3-5	15	17	4-6	15	14	5-6	15	19	4-6	15	18
Glass Rim	3-5	194	8	4-6	194	8	6-8	194	6	6-8	194	5

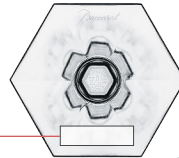
GUIDELINES

BARWARE

Engraving Area



Engraving Area



Harcourt Eve Flûte



	Latin			Latin			Latin			Latin		
	Inter Variable			Cormorant Garamond			<i>Aston</i>			<i>Palace Script</i>		
	Engraving Type	Text, Initials, Dates		Text, Initials, Dates			Text, Initials			Initials, Dates		
	Number of lines	1		1			1			1		
	Font size (mm)	Height bottom of the text (mm)	Number MAX of Characters	Font size (mm)	Height bottom of the text (mm)	Number MAX of Characters	Font size (mm)	Height bottom of the text (mm)	Number MAX of Characters	Font size (mm)	Height bottom of the text (mm)	Number MAX of Characters
Glass Stem	3-5	10	9	4-6	10	8	5-6	10	9	4-6	10	10
Glass Rim	3-5	213	11	4-6	213	9	6-8	213	9	6-8	213	7

GUIDELINES

BARWARE



Engraving Area

Everyday



	Latin			Latin			Latin			Latin		
	Inter Variable			Cormorant Garamond			<i>Aston</i>			<i>Palace Script</i>		
	Engraving Type	Text, Initials, Dates		Text, Initials, Dates			Text, Initials		Initials, Dates			
	Number of lines	1		1			1		1			
	Font size (mm)	Height bottom of the text (mm)	Number MAX of Characters	Font size (mm)	Height bottom of the text (mm)	Number MAX of Characters	Font size (mm)	Height bottom of the text (mm)	Number MAX of Characters	Font size (mm)	Height bottom of the text (mm)	Number MAX of Characters
Everyday	3-5	72	13	4-6	72	9	6-8	72	11	6-8	72	8

GUIDELINES

BARWARE



Engraving Area

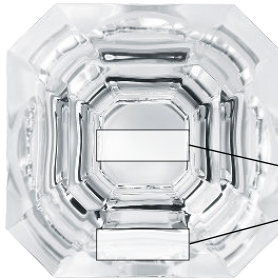
Harmonie N°2



	Latin			Latin			Latin			Latin		
	Inter Variable			Cormorant Garamond			<i>Astori</i>			<i>Palace Script</i>		
	Engraving Type	Text, Initials, Dates		Text, Initials, Dates			Text, Initials		Initials, Dates			
	Number of lines	1		1			1		1			
	Font size (mm)	Height bottom of the text (mm)	Number MAX of Characters	Font size (mm)	Height bottom of the text (mm)	Number MAX of Characters	Font size (mm)	Height bottom of the text (mm)	Number MAX of Characters	Font size (mm)	Height bottom of the text (mm)	Number MAX of Characters
Harmonie N°2	3-5	22	12	4-6	22	10	6-8	22	9	6-8	22	7

GUIDELINES

BARWARE



Engraving Area

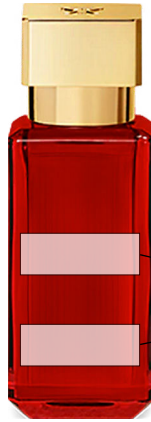
Decanter



	Latin			Latin			Latin			Latin		
	Inter Variable			Cormorant Garamond			<i>Astion</i>			<i>Palace Script</i>		
	Engraving Type	Text, Initials, Dates		Text, Initials, Dates			Text, Initials			Initials, Dates		
	Number of lines	1		1			1			1		
	Font size (mm)	Height bottom of the text (mm)	Number MAX of Characters	Font size (mm)	Height bottom of the text (mm)	Number MAX of Characters	Font size (mm)	Height bottom of the text (mm)	Number MAX of Characters	Font size (mm)	Height bottom of the text (mm)	Number MAX of Characters
Top	3-5	36	11	4-6	36	9	6-8	36	9	6-8	36	6
Side	3-5	13	11	4-6	13	9	6-8	13	9	6-8	13	6

GUIDELINES

FRAGRANCE



Engraving Area

Parfum Baccarat
35ml



	Latin			Latin			Russian			Arabic			Chinese		
	<i>Zagfino</i>			Cooperhewitt-thin			Znikomit BOEX			Dubai light			Traditional & Simplified Chinese		
	Number of lines	1 or 2		1 or 2		1 or 2		1 or 2		1 or 2		1 or 2			
	Font size (mm)	Height bottom of the text (mm)	Number MAX of Characters	Font size (mm)	Height bottom of the text (mm)	Number MAX of Characters	Font size (mm)	Height bottom of the text (mm)	Number MAX of Characters	Font size (mm)	Height bottom of the text (mm)	Number MAX of Characters	Font size (mm)	Height bottom of the text (mm)	Number MAX of Characters
Middle	4-5	41	4	4.5-6	40	4	5	40	4	5-5.7	40	4	4-6	39-39.5	4
Bottom	4-5	20.5	4	4.5-6	19.5	4	5	19.5	4	5-5.7	19.5	4	4-6	18.5-19	4

GUIDELINES

FRAGRANCE



Engraving Area

Parfum Baccarat
35ml



	Latin			Latin			Russian			Arabic			Chinese		
	<i>Zayfino</i>			Cooperhewitt-thin			Znikomit BOEX			Dubai light			Traditional & Simplified Chinese		
	Number of lines	1		1		1	1		1	1		1		1	
	Font size (mm)	Height bottom of the text (mm)	Number MAX of Characters	Font size (mm)	Height bottom of the text (mm)	Number MAX of Characters	Font size (mm)	Height bottom of the text (mm)	Number MAX of Characters	Font size (mm)	Height bottom of the text (mm)	Number MAX of Characters	Font size (mm)	Height bottom of the text (mm)	Number MAX of Characters
35ml	4.6	39	15	5.8	39	15	5	39	10	5	39	5	5.5-6	38.5-39	6

GUIDELINES

FRAGRANCE



Engraving Area

**Parfum Baccarat
70ml**



	Latin			Latin			Russian			Arabic			Chinese		
	<i>Zapfino</i>			Cooperhewitt-thin			Znikomit BOEX			Dubai light			Traditional & Simplified Chinese		
	Number of lines	1 or 2		1 or 2		1 or 2		1 or 2		1 or 2		1 or 2			
	Font size (mm)	Height bottom of the text (mm)	Number MAX of Characters	Font size (mm)	Height bottom of the text (mm)	Number MAX of Characters	Font size (mm)	Height bottom of the text (mm)	Number MAX of Characters	Font size (mm)	Height bottom of the text (mm)	Number MAX of Characters	Font size (mm)	Height bottom of the text (mm)	Number MAX of Characters
Middle	4-5	31	14	4.5-6	30.5	11	5	30.5	7	5-5.7	30.5	8	4-6	30-30.5	4-5
Bottom	4-5	20.5	14	4.5-6	20	11	5	17.5	7	5-5.7	20	8	4-6	16.5-17	4-5

GUIDELINES

FRAGRANCE



Engraving Area

**Parfum Baccarat
200ml**



	Latin			Latin			Russian			Arabic			Chinese		
	<i>Zagfino</i>			Cooperhewitt-thin			Znikomit BOEX			Dubai light			Traditional & Simplified Chinese		
	Number of lines	1 or 2		1 or 2		Number MAX of Characters	1 or 2		Number MAX of Characters	1 or 2		Number MAX of Characters	1 or 2		Number MAX of Characters
	Font size (mm)	Height bottom of the text (mm)	Number MAX of Characters	Font size (mm)	Height bottom of the text (mm)	Number MAX of Characters	Font size (mm)	Height bottom of the text (mm)	Number MAX of Characters	Font size (mm)	Height bottom of the text (mm)	Number MAX of Characters	Font size (mm)	Height bottom of the text (mm)	Number MAX of Characters
Middle	4-6	49	15	3.5-4	50	19	5	49.5	9	5-5.7	49.5	12	4-6	49	6
Bottom	4-5	20.5	19	4.5-6	20	15	5	20	9	5-5.7	19.5	12	4-6	19.5	6

POSITIONING REQUIREMENTS

To position a product, you will require the following:

1. The positioning block
2. The product

POSITIONING

For each product you have to choose the right positioning block.

Please refer to the product volume marked on each positioning block.



30ml
Parfum Baccarat



70ml
Parfum Baccarat



200ml
Parfum Baccarat



Vase
Clear



Vase
Bud



Base Block

POSITIONING REQUIREMENTS



Everyday Glass Rim
Harcourt 1841 Glass Rim



Château Baccarat (L)
Glass Rim



Harcourt Eve
Glass Rim



Specific
Base Block



Harcourt Eve
Glass Stem



Château Baccarat (L)
Glass Stem



Harcourt 1841
Glass Stem



Decanter Side



Decanter Top

POSITIONING REQUIREMENTS



Harmonie N°2
Glass Stem



Modular Base



Amor Heart



Butterfly

EMBELLISHMENT REQUIREMENTS

Please use the provided accessories to ensure compliance with the engraving process:



Color tubes

- Silver
- Gold



Microfiber cloth



Felt



Soft brush



Hard brush



Paintbrush



Tape

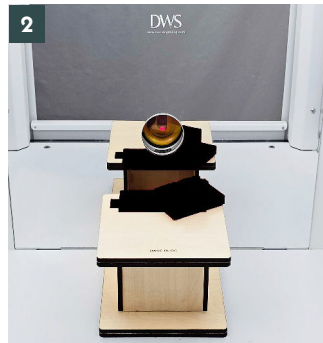
ENGRAVING PROCESS

Butterfly

Kindly note that the positioning system is the same for all butterflies.



Place the «Base Block» toward the front, inside the engraving booth, by fitting it onto the alignment pins.



Please use the « Butterfly » extension positioning block and place it on top of the base block.



Place the product and make sure the butterfly wing is facing the laser.

ENGRAVING PROCESS

Amor Heart

Kindly note that the positioning system is the same for all Amor Hearts.



Place the «Base Block» toward the front, inside the engraving booth, by fitting it onto the alignment pins.



Please use the “Amore Heart” extension positioning block and place it on top of the base block.



Place the product upside down, facing the laser.

For classic engraving, engrave the front of the product.

For magnifying effect engraving, engrave the back of the product in mirror mode.

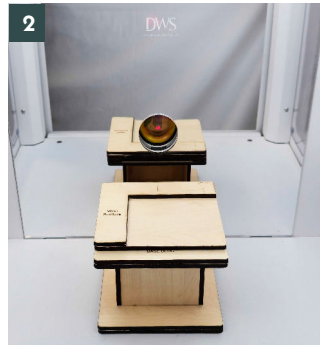
ENGRAVING PROCESS

Vase

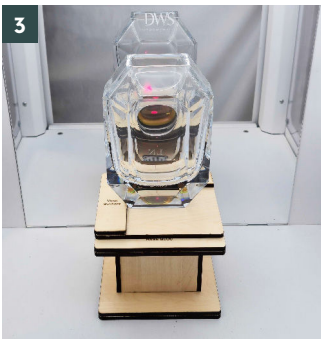
Kindly note that the positioning system is the same for all Vases.



Place the «Base Block» toward the front, inside the engraving booth, by fitting it onto the alignment pins.



Please use the “Vase Clear” or «Vase Bud» extension positioning block and place it on top of the base block.



Place the product, then align it using the edges of the extension.

ENGRAVING PROCESS

Parfum Baccarat

Kindly note that the positioning system is the same for all Parfums Baccarat.



1 Place the «Base Block» toward the front, inside the engraving booth, by fitting it onto the alignment pins.



2 Please use the “35, 70, or 200 ml” extension positioning block and place it on top of the base block.



3 Place the product, with its sides facing the laser.

ENGRAVING PROCESS

Harcourt 1841 Glass Rim

Kindly note that the positioning system is the same for all Harcourt 1841.



1 Place the «Base Block» toward the front, inside the engraving booth, by fitting it onto the alignment pins.



2 Please use the « Harcourt 1841 Glass Rim » extension positioning block and place it on top of the base block.

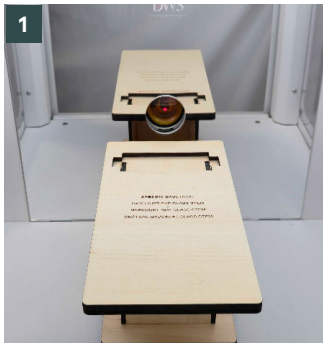


3 Position the glass upside down, with the engraving area centered between the two markers, and facing the laser.

ENGRAVING PROCESS

Harcourt 1841 Glass Stem

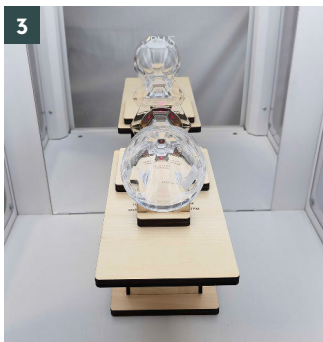
Kindly note that the positioning system is the same for all Harcourt 1841.



Place the «Specific Base Block» toward the front, inside the engraving booth, by fitting it onto the alignment pins.



Please use the «Harcourt 1841 Glass Stem» extension positioning block and place it on top of the base block.

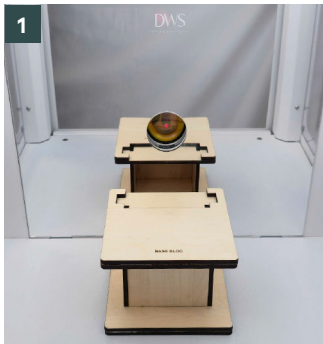


Place the product, ensuring the glass base rests on the dedicated space and facing the laser.

ENGRAVING PROCESS

Château Baccarat (L) Glass Rim

Please refer to the instructions below for engraving:



Place the «Base Block» toward the front, inside the engraving booth, by fitting it onto the alignment pins.



Position the glass upside down, nesting it in the dedicated space, and facing the laser.



Please use the «Château Baccarat» extension positioning block and place it on top of the base block.

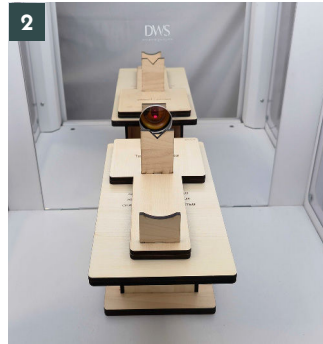
ENGRAVING PROCESS

Château Baccarat (L) Glass Stem

Please refer to the instructions below for engraving:



1 Place the «Specific Base Block» toward the front, inside the engraving booth, by fitting it onto the alignment pins.



2 Please use the « Château Baccarat » extension positioning block and place it on top of the base block.

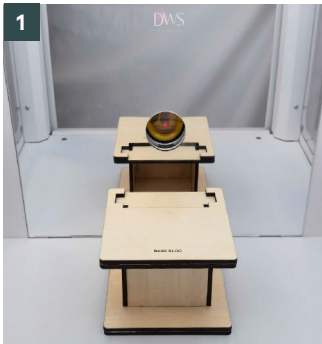


3 Place the product, ensuring the glass base rests onto the dedicated space and facing the laser.

ENGRAVING PROCESS

Harcourt Eve Glass Rim

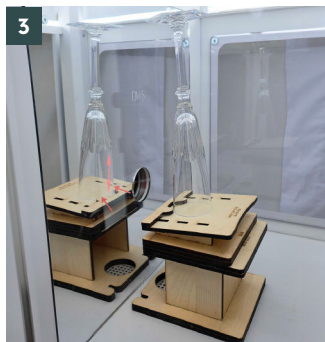
Kindly note that the positioning system is the same for all Harcourt Eve.



1 Place the «Base Block» toward the front, inside the engraving booth, by fitting it onto the alignment pins.



2 Please use the « Harcourt Eve » extension positioning block and place it on top of the base block.



3 Position the glass upside down, with the engraving area centered between the two markers, and facing the laser.

ENGRAVING PROCESS

Harcourt Eve Glass Stem

Kindly note that the positioning system is the same for all Harcourt Eve.



1 Place the «Specific Base Block» toward the front, inside the engraving booth, by fitting it onto the alignment pins.



2 Please use the «Harcourt Eve Glass Stem» extension positioning block and place it on top of the base block.



3 Place the product, ensuring the glass base rests on the dedicated space and facing the laser.

ENGRAVING PROCESS

Everyday

Please refer to the instructions below for engraving:



Place the «Base Block» toward the front, inside the engraving booth, by fitting it onto the alignment pins.



Please use the « Everyday Glass Rim » extension positioning block and place it on top of the base block.



Position the glass upside down, with the engraving area centered between the two markers, and facing the laser.

ENGRAVING PROCESS

Harmonie N°2

Please refer to the instructions below for engraving:



Place the «Base Block» toward the front, inside the engraving booth, by fitting it onto the alignment pins.



Please use the «Harmonie N°2 » extension positioning block and place it on top of the base block.



Place the glass in the designated area, ensuring the base of the glass is facing the laser.

ENGRAVING PROCESS

Decanter (Engraving Top)

Kindly note that the positioning system is the same for all Decanters.



1 Place the «Base Block» toward the front, inside the engraving booth, by fitting it onto the alignment pins.



2 Please use the “Decanter top” extension positioning block and place it on top of the base block.



3 Place the product and make sure the top to be engraved is facing the laser.

ENGRAVING PROCESS

Decanter (Engraving Side)

Kindly note that the positioning system is the same for all Decanters.



Place the «Base Block» toward the front, inside the engraving booth, by fitting it onto the alignment pins.



Please use the “Decanter side” extension positioning block and place it on top of the base block.



Place the product and make sure the side to be engraved is facing the laser.

EMBELLISHMENT PROCESS

BARWARE

Kindly note that the cleaning process is the same for all Barware products.



Use the tape to remove the residues.



Then, brush the surface with a soft brush to remove any remaining particles.



Then, use a microfiber cloth to gently wipe the surface and remove any remaining dust.

EMBELLISHMENT PROCESS

DECORATION & FRAGRANCE

Kindly note that the embellishment process is the same for all Decoration & Fragrance products.



Use the tape to remove the residues.



Then, brush the surface with a soft brush to remove any remaining particles.



Then, use a paintbrush to spread the gold or silver patina over the engraving.



Clear the excess patina by using the felt.

ASSISTANCE

If you need help, please contact:

- **Technical hotline**

EMEA

support@dws-engraving.com

+ 33 7 80 91 73 46

DWS

ENGRAVING EMOTIONS



[dws.engraving](https://dws-engraving.com)

www.dws-engraving.com